

East Kalimantan as a tourist destination, has a potential that is no less interesting than other tourist destinations in Indonesia. The tourism sector in East Kalimantan is dominated by 90% of natural tourist destinations and 10% of artificial tourist destinations that are scattered throughout the regencies/cities in the Province. West Kutai Regency as one of the 10 regencies/cities in East Kalimantan which has natural and cultural potential which the local government continues to develop through the tourism sector, where the tourism sector has great potential as a source of regional income. In Indonesia, the tourism sector has become a prima donna sector in generating foreign exchange as has been discussed in many online media and one of them is the kompas.com website in "It's The Tourism Industry Becomes the Most Producing Foreign Exchange Sector". West Kutai Regency has several types of tourist destinations which are divided into three categories scattered throughout the sub-districts, namely:

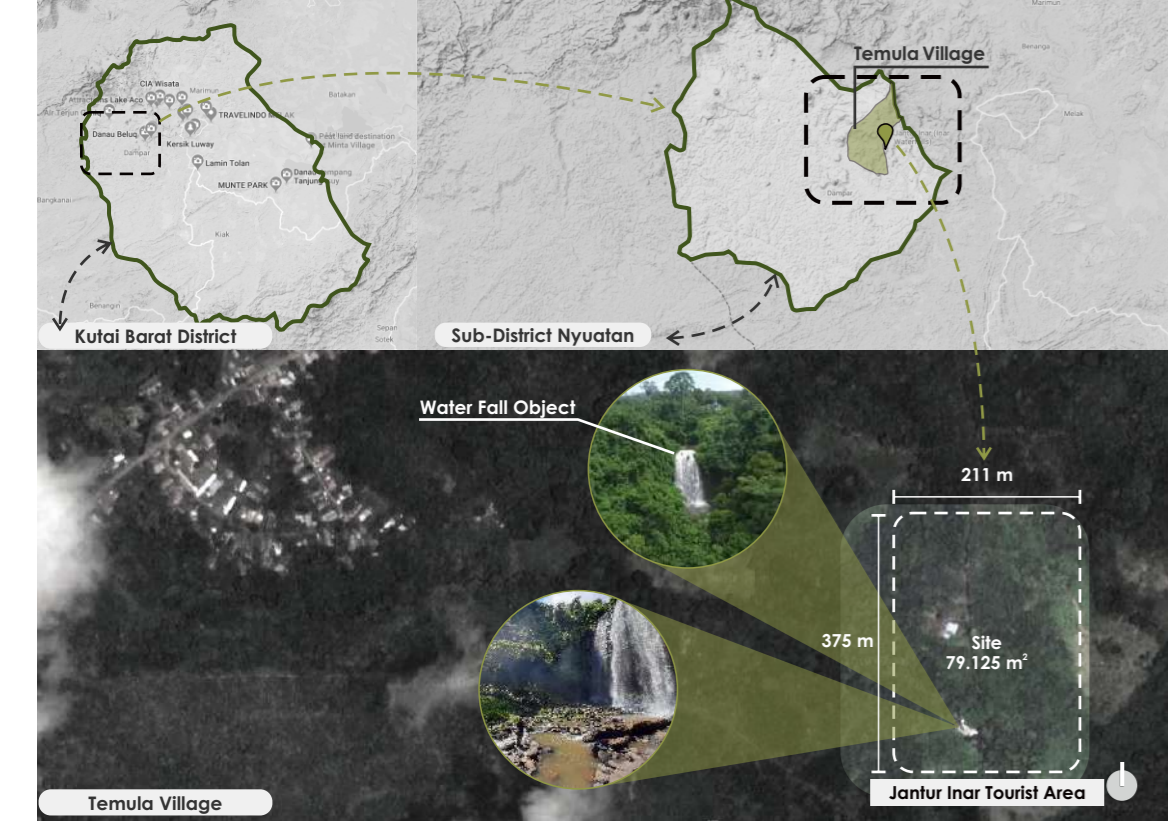
- 55 natural attractions
- 15 cultural tours
- 11 historical tours

81 Destinations

Of the total tourist destinations in West Kutai Regency, there are 10 leading destinations summarized in the data belonging to the West Kutai Regency Tourism Office.

And Jantur Inar Tourism destination is one of them.

JANTUR INAR LOCATION



The Jantur Inar / Inar Waterfall tourist destination is in the administrative area of Temula village, Nyuatan district, West Kutai district, East Kalimantan, Indonesia.

PHENOMENON

However, the Jantur Inar tourist spot has several problems related to its carrying capacity as a natural tourist spot that is less than optimal, such as unavailability of supporting facilities for tourism activities, limited space for attractions, and less optimal response to the potential of the surrounding environment.



INFRASTRUCTURE/FACILITY

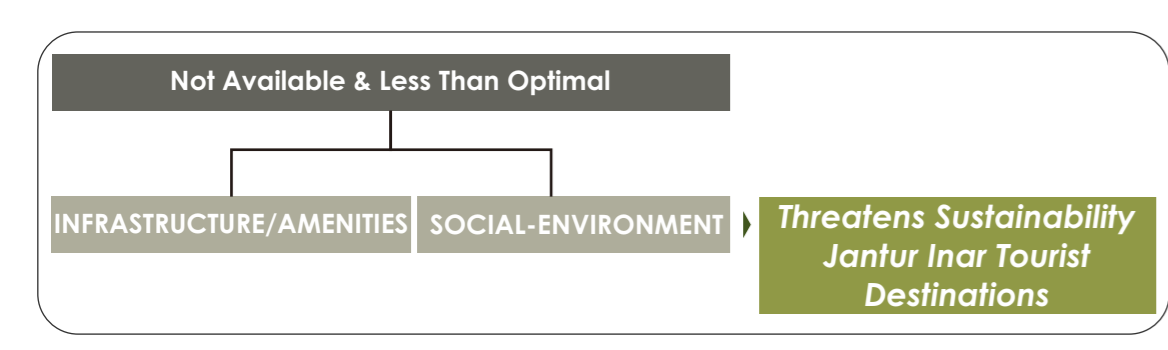
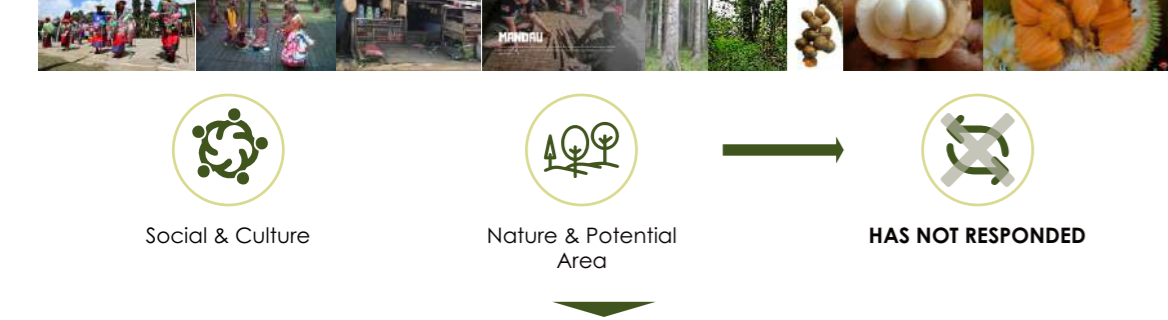


SITE EXISTING



The site area is in a green open space area with varied land cover of tree vegetation such as height and tree size dimensions. The site area is also close to the settlement of Temula villages, which is only about 1000m away.

SOCIAL ENVIRONMENT



CONCEPT DESIGN



ECOLOGICAL ARCHITECTURE



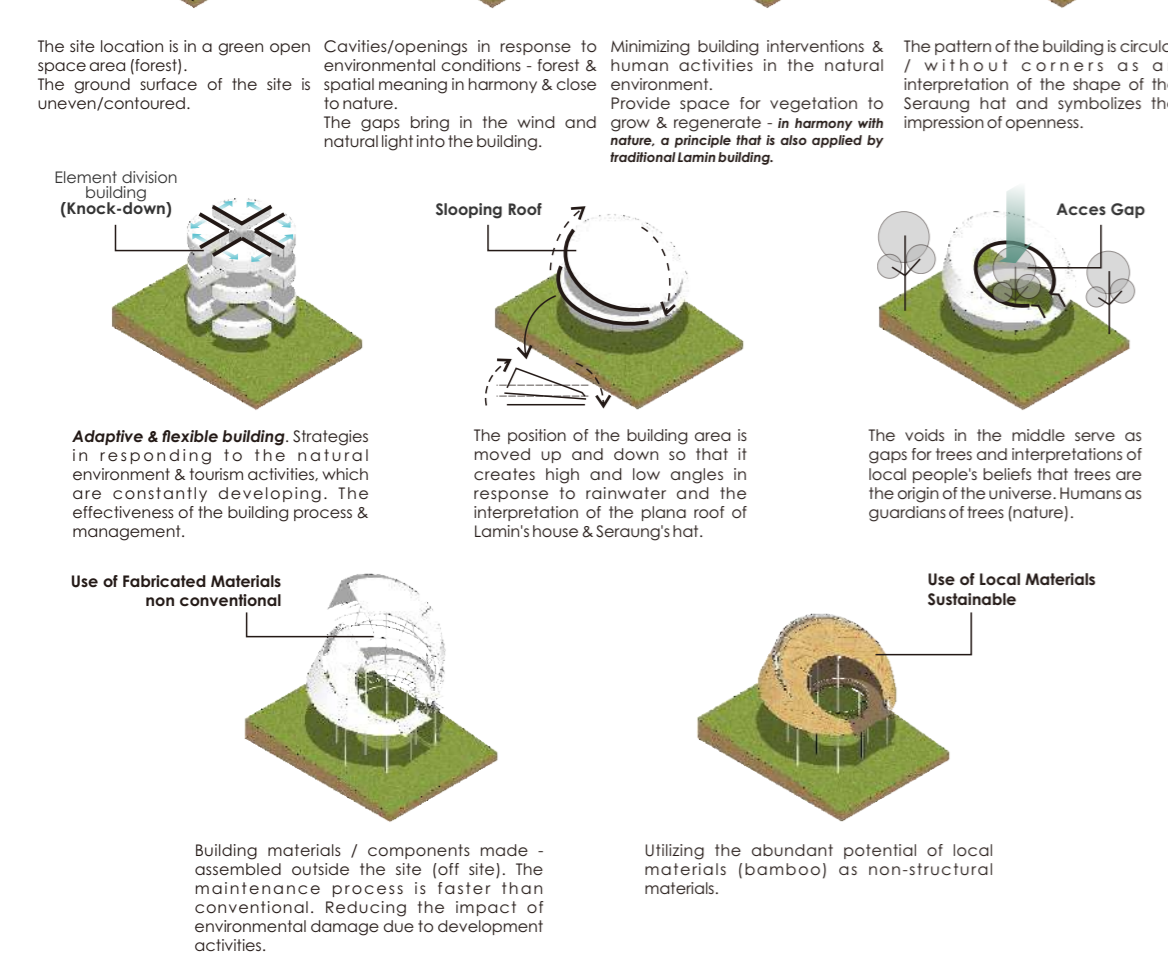
SITE CONTEXT



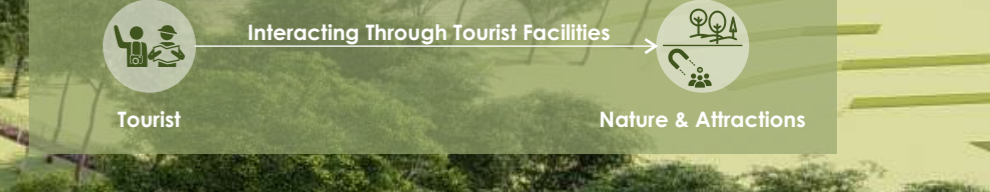
GOALS



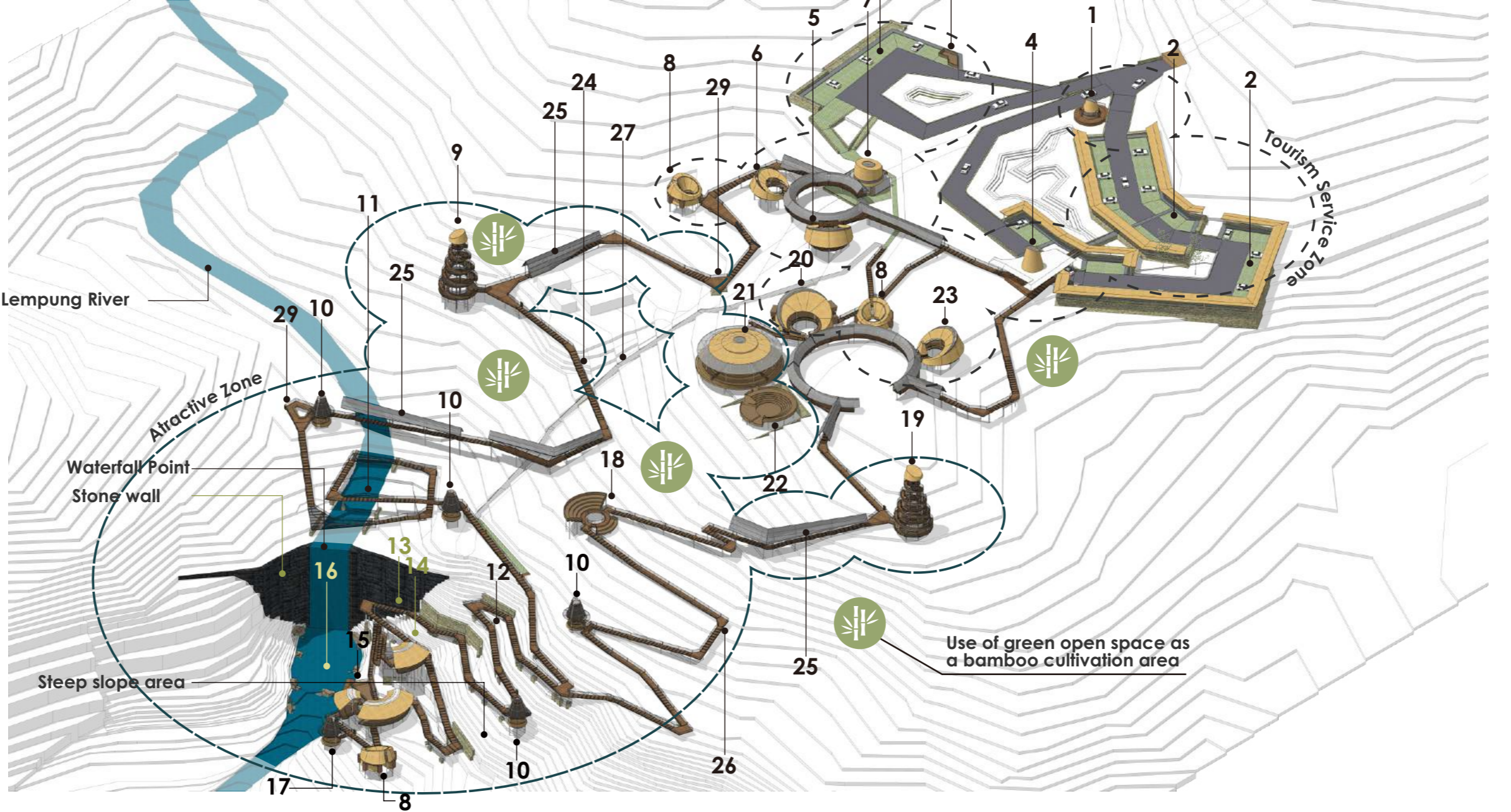
Implementation into a DESIGN TRANSFORMATION



INTERACTIVE TOURISM FACILITIES OF JANTUR INAR WITH ECOLOGICAL ARCHITECTURE APPROACH



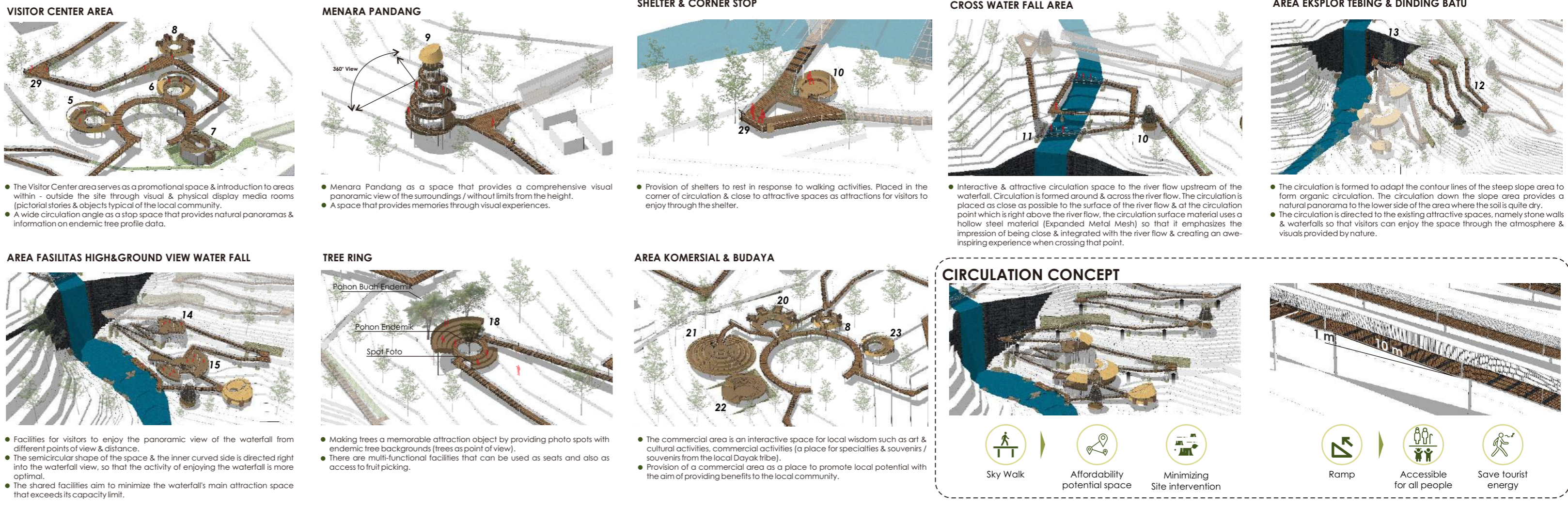
AXONOMETRIC MASTER PLAN



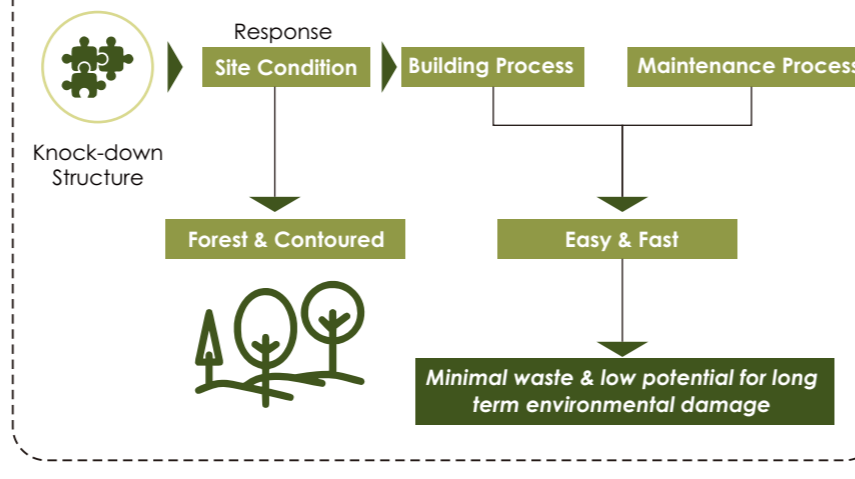
KETERANGAN :

- SECURITY POST ACCESS ENTRY & ACCESS OUT OF TOURIST AREAS
- VISITOR PARKING AREA
- MANAGER PARKING AREA
- TICKETS, ENTRY & EXIT AREAS PEDESTRIAN ROUTES
- INTERACTIVE INFORMATION DISPLAY ROOM (AREA VISITOR CENTER)
- VISUAL INFORMATION DISPLAY ROOM (AREA VISITOR CENTER)
- SERVICE & MANAGEMENT CENTER ROOM (AREA VISITOR CENTER)
- PUBLIC TOILETS
- TOWER OF VIEW- VISITORS COME
- SHELTER
- AREA OF CROSS WATER FALL
- SLOPE EXPLORE AREA
- EXPLORE AREA OF STONE WALL
- WATER FALL HIGH VIEW FACILITIES
- WATER FALL GROUND VIEW FACILITIES
- WATER PLAYING AREA (INAR WATERFALL / INAR JANTUR)
- SHELTER POST MONITORING
- TREE RING FACILITIES
- TOWE OF VIEW VISITORS RETURN HOME
- HAWKER CENTER
- EATING AREA
- AMPHITHEATER
- SOUVENIR CENTER
- PEDESTRIAN TO WATER FALL (CIRCULATION RAMP)
- INFORMATION CIRCULATION (SHELTER)
- EMERGENCY CIRCULATION
- TEMPORARY WASTE PLACES
- TREE INFORMATION CORNER

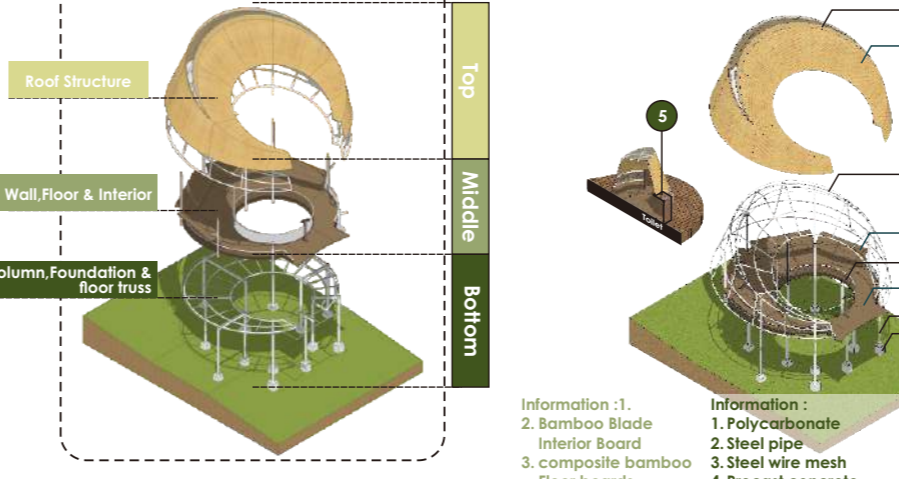
INTERACTIVE & ATTRACTIVE SPACE DESIGN CONCEPTS > Building Space & Site Environment / Nature Interact with humans / users of space through the visual, atmosphere, and physical that are accommodated by the tourist facilities.



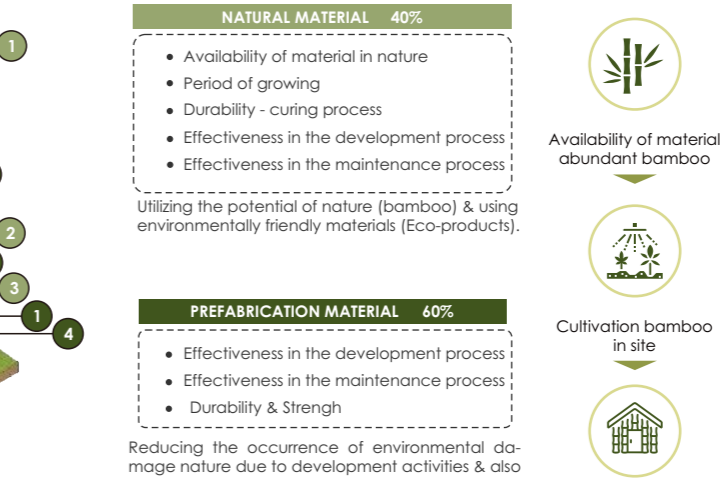
KNOCK-DOWN DESIGN



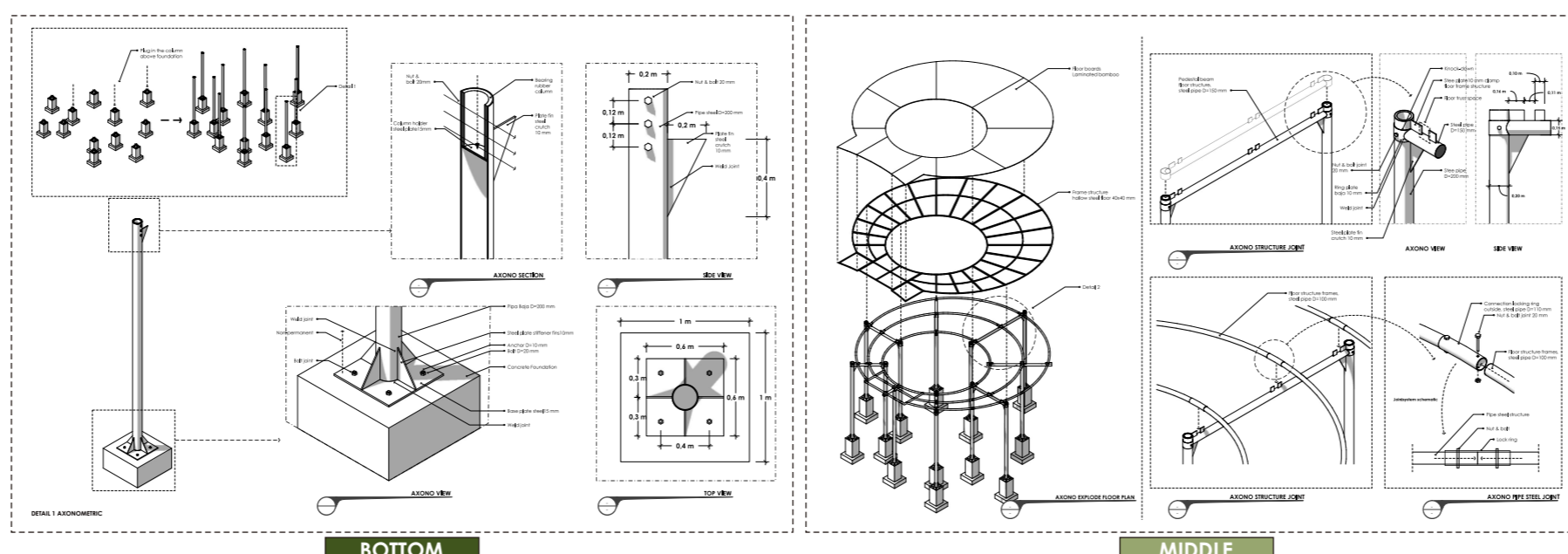
SUSTAINABLE LOCAL MATERIAL USE



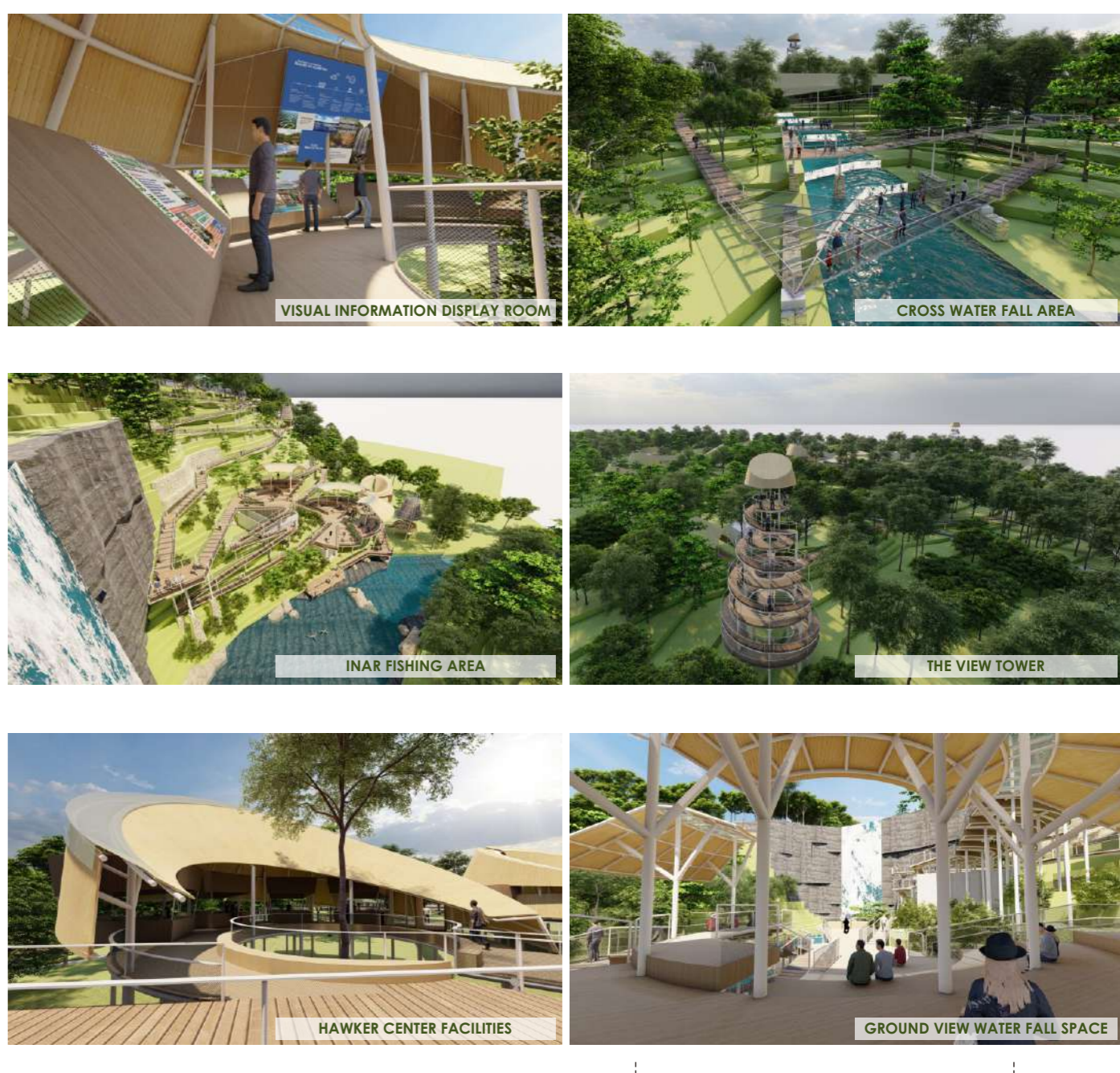
ADAPTIVE FACILITIES



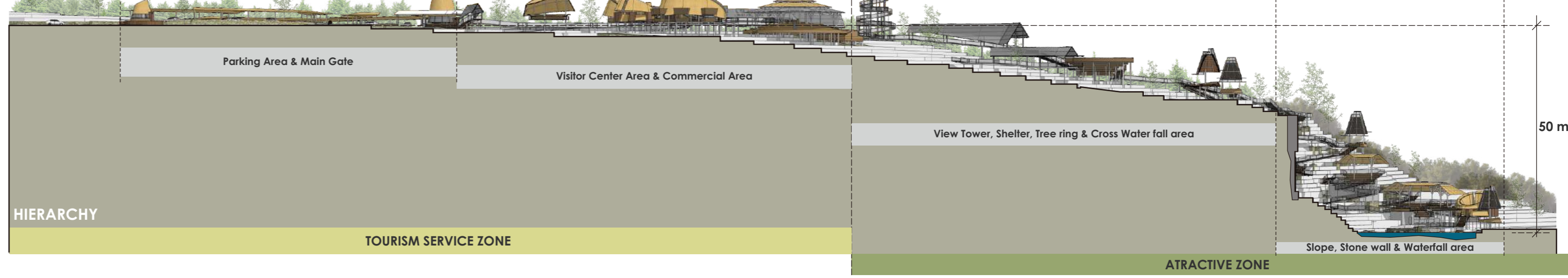
KNOCK-DOWN PART & DETAILS



PERSPECTIVE



AREA SECTION



HIERARCHY

